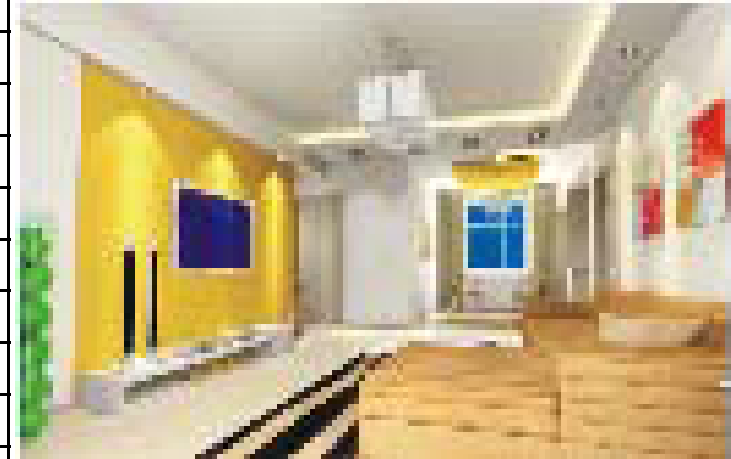


## 6 X 1W LED Downlight



<b>Model No.</b>	<b>MS-DL002006</b>	<b>MS-DL005006</b>
<b>Input Voltage(VAC)</b>	<b>18V</b>	
<b>Current</b>	<b>350mA</b>	
<b>Power Factor(PF)</b>	<b>&gt;0.8</b>	
<b>Total Harmonic Distortion</b>	<b>&lt;15%</b>	
<b>Power Efficiency</b>	<b>85%</b>	
<b>LED Luminous Efficiency</b>	<b>&gt;75lm/ 1 LED watt</b>	
<b>LED Consumption(W)</b>	<b>6W</b>	
<b>System Consumption(W)</b>	<b>7.5W</b>	
<b>LED Initial Flux(LM)</b>	<b>&gt;440lm</b>	
<b>Lamp's Efficiency(%)</b>	<b>90%</b>	
<b>Color Temperature</b>	<b>3000K(WW), 4100K(NW), 5500K(PW)</b>	
<b>Color Rendering Index(CRI)</b>	<b>Ra&gt;75</b>	
<b>Junction Temperature</b>	<b>&lt;70 °C</b>	
<b>Working Enviornment</b>	<b>&lt;90% humidity</b>	
<b>IP Rating</b>	<b>IP20</b>	
<b>Working Life</b>	<b>35,000-50,000 hours</b>	
<b>Tube Lamp material</b>	<b>Aluminum +PC</b>	
<b>Net Weight</b>	<b>0.9lb 0.4kgs</b>	
<b>Packing Size(mm)</b>	<b>560 x 320 x 430/ctn/60pcs</b>	
<b>Certification</b>	<b>CE/LVD,CE/EMC,RoHs,</b>	



Fix type  
 size:90 x H53mm  
 cut-out:76mm

Rotary type  
 size:100 x H53mm  
 cut-out: 80mm

## 1 X 1W LED Downlight



<b>Model No.</b>	<b>MS-DL001001    MS-DL004001</b>
<b>Input Voltage(VAC)</b>	<b>3.5V</b>
<b>Current</b>	<b>350mA</b>
<b>Power Factor(PF)</b>	<b>&gt;0.8</b>
<b>Total Harmonic Distortion</b>	<b>&lt;15%</b>
<b>Power Efficiency</b>	<b>85%</b>
<b>LED Luminous Efficiency</b>	<b>&gt;70lm/ 1 LED watt</b>
<b>LED Consumption(W)</b>	<b>1W</b>
<b>System Consumption(W)</b>	<b>1.2W</b>
<b>LED Initial Flux(LM)</b>	<b>&gt;72lm</b>
<b>Lamp's Efficiency(%)</b>	<b>90%</b>
<b>Color Temperature</b>	<b>3000K(WW), 4100K(NW), 5500K(PW)</b>
<b>Color Rendering Index(CRI)</b>	<b>Ra&gt;75</b>
<b>Junction Temperature</b>	<b>&lt;70 °C</b>
<b>Working Enviornment</b>	<b>&lt;90% humidity</b>
<b>IP Rating</b>	<b>IP20</b>
<b>Working Life</b>	<b>35,000-50,000 hours</b>
<b>Tube Lamp material</b>	<b>Aluminum +PC</b>
<b>Net Weight</b>	<b>0.5lb    0.23kgs</b>
<b>Packing Size(mm)</b>	<b>482x 322 x 372/ctn/72pcs</b>
<b>Certification</b>	<b>CE/LVD,CE/EMC,RoHs,</b>



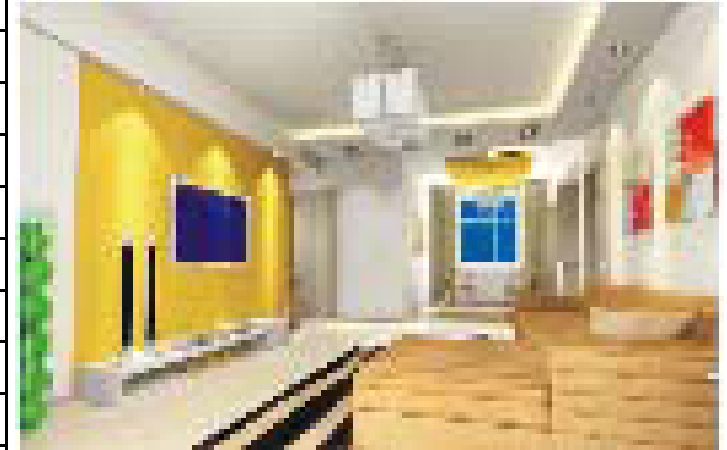
Fix type  
 size:60 x H38mm  
 cut-out:46mm

Rotary type  
 size:66 x H42mm  
 cut-out:58mm

## 3 X 1W LED Downlight



Model No.	MS-DL007003 MS-DL010003
Input Voltage(VAC)	9V
Current	350mA
Power Factor(PF)	>0.8
Total Harmonic Distortion	<15%
Power Efficiency	85%
LED Luminous Efficiency	>80lm/ 1 LED watt
LED Consumption(W)	3W
System Consumption(W)	4W
LED Initial Flux(LM)	>250lm
Lamp's Efficiency(%)	90%
Color Temperature	3000K(WW), 4100K(NW), 5500K(PW)
Color Rendering Index(CRI)	Ra>75
Junction Temperature	<70 °C
Working Environment	<90% humidity
IP Rating	IP20
Working Life	35,000-50,000 hours
Tube Lamp material	Aluminum +PC
Net Weight	0.66lb 0.3kgs
Packing Size(mm)	515*360*396/ctn/60pcs
Certification	CE/LVD,CE/EMC,RoHs,



Fix type  
 size:76 x H40mm  
 cut-out:62mm

Rotary type  
 size:86 x H40mm  
 cut-out:72mm.